

SYNDICATE GROUP 2 PRESENTATION

**Syndicate Focus Area: Township Economic Development
Case Study: The case of Kya Sand and Nancefield Industrial Nodes**

Group Members:

**Lebo Molefe; Nontobeko Mwelase; Hyven Kholophe; Malijeng Ngqaleni;
Mlamli Zenzile; Siyabulela Mamkeli & Caiphus Chauke**

INTRODUCTION

- ❑ The Kya-Sands and Nancefield industrial nodes have common features such as the illegal electricity connections directly from the abandoned buildings, exposed substation and street light poles that are dangerous for communities that are residing within the area.
- ❑ The environment has direct and indirect impact on the sustainability of the industrial nodes unless certain planning approaches that will complement the revitalisation of those industrial area are considered.
- ❑ The proposed interventions shall includes the following:
 - *In-situ upgrading of the informal settlement and relocation of the affected community within close proximity to the area. This will address the issues of illegal connection and accessibility within the area.*
 - *Designed Zonal Map (Precinct Plan) that encouraged High density Mixed Housing typologies and integrated mixed land uses with public amenities and facilities linked with transport.*
 - *Retention or revitalisation strategy for industrial area.*
 - *Engineering infrastructure Maintenance and upgrading by the Township Developer in partnering with the Municipality since the development play a crucial role in growth of the economy and address other challenges that the SDG and NDP seek to address.*



Google Maps Nancefield Industrial Park



MYTHS AND METAPHORS

MYTHS	METAPHOR
Informal settlement' population are Criminals and Illegal Foreign Immigrants	Sea of Nameless faces
Illegal Foreign Immigrants are employment stealers	Survival of the fittest
Blacks & Foreign Immigrants do not contribute to the economy	Stench of Failure
Private sector and informality can't co-exist	A City on a hill
Treatment of informality as illegal and a nuisance	The City is a jungle

Debunking the Myths: All the world's stage, and all the men and women merely players - Shakespeare

Call to Action: In the melting pot of cultures and stakeholders, we can work together to build a vibrant, economically thriving integrated industrial node with jobs for the people

PROBLEM STATEMENT

- **The uncoordinated land uses, infrastructure plan and the provision of services within this industrial nodes hampers business confidence and the successful integration between established, small & emerging businesses** which are critical anchors of the township economy programme.
- **The poor collaboration & partnership between the private developers, industrialists, service providers, communities, the City of Johannesburg and other spheres of government, SOCs & SOEs** is a major deterrent to effective local economic development, transformation and growth.
- **Lowered business confidence and inward investment.**

PROBLEM STATEMENT Cont..

- ❑ The lack of formalisation of the **informal settlement next to Kya-Sands industrial node** to address issues relating to basic services such energy, roads & storm-water, water & sanitation, safety & security, transportation and other public facilities & amenities.
- ❑ The **lack or poor application of planning legal instruments** such as a precinct plan to address issues of forward planning which includes:
 - Zonal Plan
 - Zoning information (land acquisition)
 - Legal consideration
 - Area of disaster
 - Services installation and infrastructure upgrade/needs
 - Housing typologies (high density)
 - Compact settlement
- ❑ Lack of a **collective industrial node revitalisation strategy** disables structured linkages between big & small businesses such as recycling SMMEs and cooperatives to be mainstreamed. This approach could enable integration and collaborative networks and B2B connection with communities of the informal settlement.

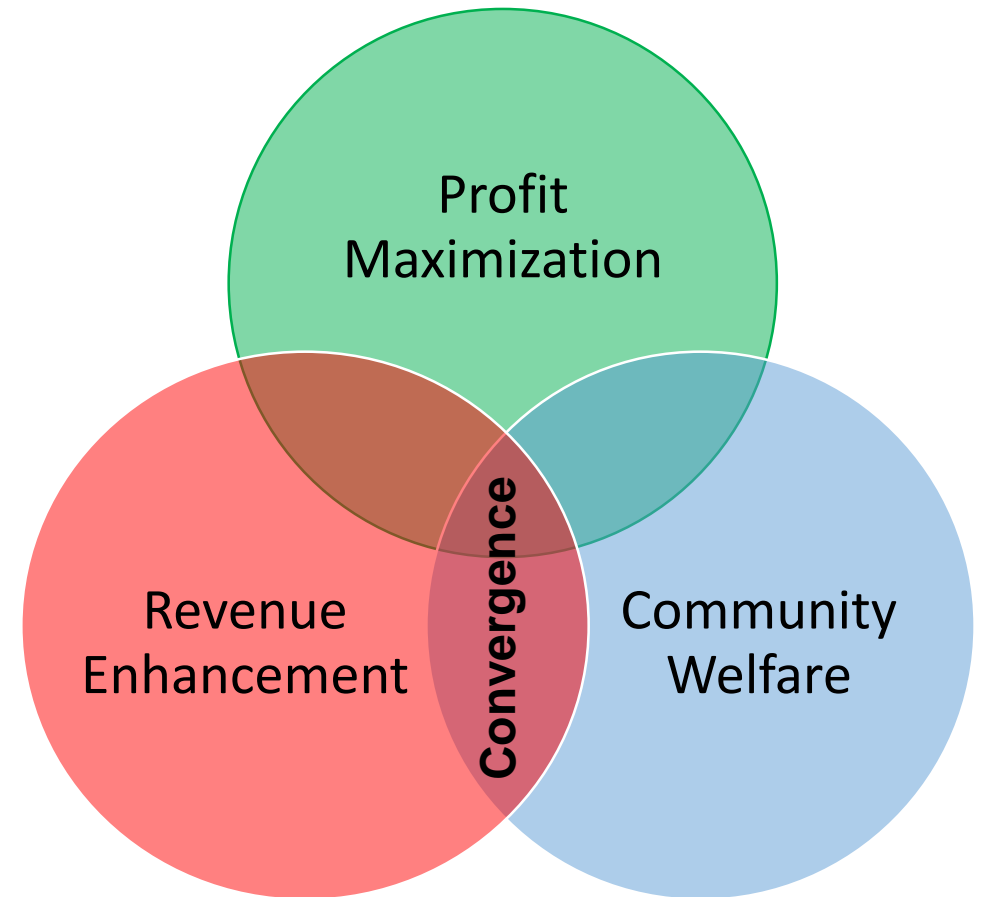
INDUSTRIAL NODE SOLUTIONNEERING PRINCIPLES & APPROACHES



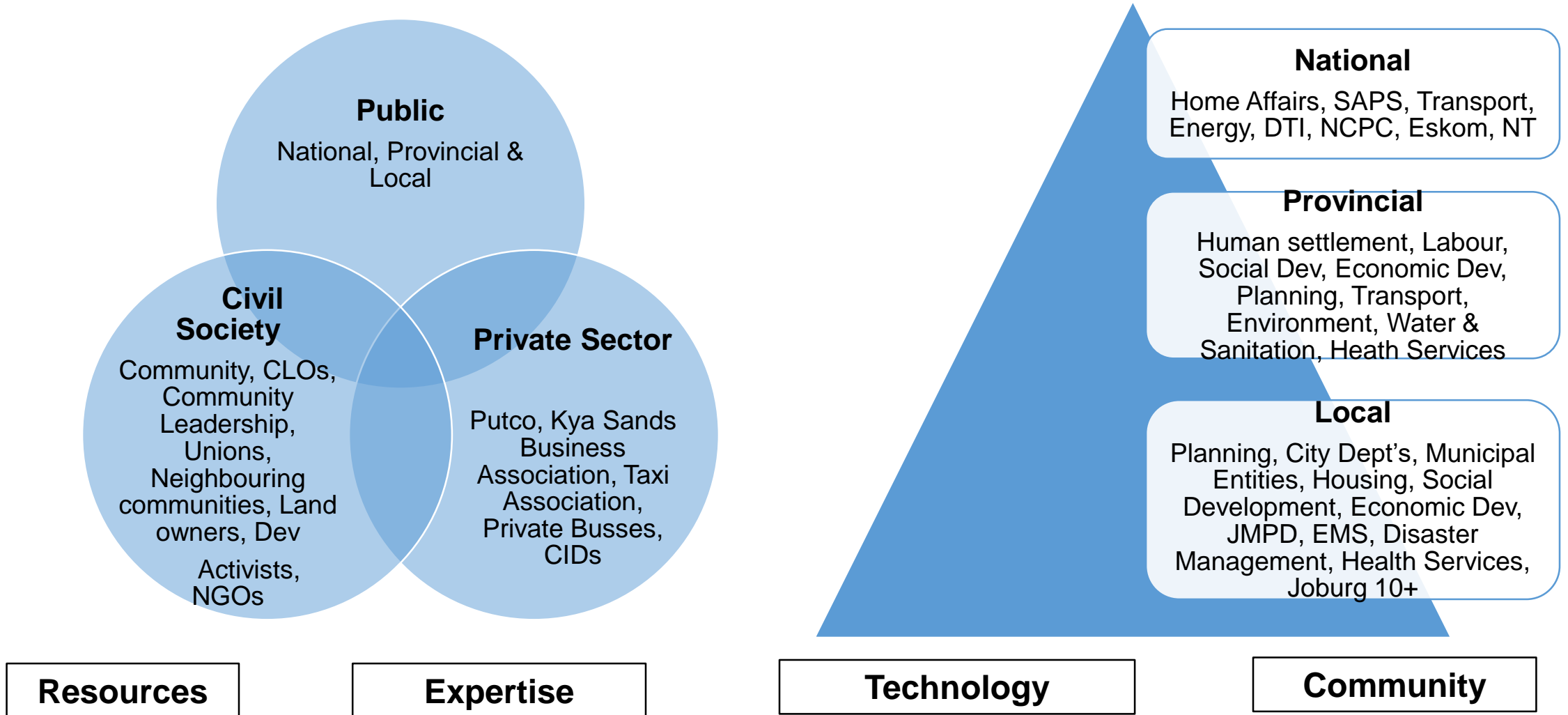
PROCESS AND STRUCTURES FOR ACTION

New Resources

Long-Term So.	Treated Appro	Roles	Resour	Comptor	Pa.
1. Strengthen Business Retention Strategy	1. Infra. Dev & Maintenance	City Power Joburg Water Transport Dept Gautrings	Regional Maintenance Response Team Joburg 10+	Economic Dev Champion	Estkom Rand Water
	2. Safety & Security	Busi. Assos SMPD SAPS	Access Control	ELD 11470	CoJ



STAKEHOLDER LANDSCAPE



SYNDICATION LESSONS LEARNED & INTEGRATED

- Official future approach;
- Integrated Development Planning approach;
- Transparency, fairness, inclusive & common purpose approach;
- Collaborative networks approach;
- Investment Climate Reforms:
- Golden Thread Analysis approach; and
- MAP System Connections (Government, Donors, Communities & Business)

DESIGN THINKING ANALYSIS

Ideal Solution	Ideal Approach	Ideal Roles	New Resource	New Competencies	New Partners	Implementation Timeline
Business Retention	Services improvement infrastructure & maintenance	<ul style="list-style-type: none"> • Gautrans • City Power • Joburg Water • Joburg 10+ • Kya-Sands Business Association 	Regionalized Maintenance Response Team	Community Economic Development Activist	<ul style="list-style-type: none"> • DBSA • Eskom • Rand Water • UJ • DTI 	0-3 years
	Safety & Security Improvement	<ul style="list-style-type: none"> • Kya-Sands Business Association • JMPD • SAPS 	Access Control modernization infrastructure & technology	Community Improvement District Centre Management capabilities	<ul style="list-style-type: none"> • Centre for Security Studies • Security Cluster 	<1 year

DESIGN THINKING ANALYSIS

Ideal Solution	Ideal Approach	Ideal Roles	New Resource	New Competencies	New Partners	Implementation Timeline
Community Development & Services	<ul style="list-style-type: none"> Stakeholder/Need Analysis Community Engagement 	<ul style="list-style-type: none"> Ward Councillour Community Leaders Communities Business Association CoJ 	<ul style="list-style-type: none"> Community Formations/Structures Community Liaison Officer 	<ul style="list-style-type: none"> Public private Partnership Community Development Activist 	Provincial Planning Commission	<1 year
	Community Economic & Social Upliftment programme	<ul style="list-style-type: none"> Kya-Sands Business Association CoJ Economic Development Department 	<ul style="list-style-type: none"> Formal & Informal Trading Facilities Business Incubation. Micro-Industrial Space Enterprise Finance Information Portal, Skills & Labour Centre 	<ul style="list-style-type: none"> Community Economic Development Activist Supplier Development Business Linkage Network 	<ul style="list-style-type: none"> National/Provincial Dept. of Econ Dev. SEDA, SEFA & GEP Corporate SA (CSI/SLPs) Organized Labour 	<1 year

DESIGN THINKING ANALYSIS

Ideal Solution	Ideal Approach	Ideal Roles	New Resource	New Competencies	New Partners	Implementation Timeline
Infrastructure Development and Maintenance	Electrification of Informal Settlements & Energy Base-load Upgrade	<ul style="list-style-type: none"> CoJ Electricity Department Eskom Kya-Sands Business Association 	<ul style="list-style-type: none"> Prepaid Metering System, Recharge stations Sub-station Upgrade 	Energy Mix Analysis, planning & grid Load Management	Dept. of Energy	1-2 years
	Recapitalization of Ageing Infrastructure	<ul style="list-style-type: none"> City of Johannesburg JRA 	<ul style="list-style-type: none"> Storm-water Drainage Water Reticulation System 	Infrastructure Backlog Recovery System Planning	DBSA	3-5 years
	Waste Management	<ul style="list-style-type: none"> Pikitup NCPC Kya-Sands Business Association Dept. of Environmental Affairs 	<ul style="list-style-type: none"> Installation of Mini-dump sites Recycling Bins 	Waste recycling and energy mix convergence	<ul style="list-style-type: none"> NCPC Community Development Activist 	0-2 years

CHALLENGES & ENABLERS

CHALLENGES	OVERCOMING INTERVENTIONS
Budget Constraints	<ul style="list-style-type: none">• IDP (IGR)• CSI/SLP• Donor Aid• Development Finance• Gov Funding (DTI, Grant reforms, etc.)• PPPs• Green Climate Fund
Skills and Expertise	<ul style="list-style-type: none">• UNID• UNDP
Community Engagement	<ul style="list-style-type: none">• Community Fora;• Partnerships (skilling, financing, solutioneering etc.)

LEGAL AND REGULATORY ENVIRONMENT

Legal:

- Installation and Upgrading of engineering services within a formalized Township.
 - Safety and security
- Provision of decent housing
 - SMMEs Development
- Formalization of the informal settlement

Illegal:

- Illegal electricity Connection
- Illegal dumping site
- Illegal land use and settlement
 - Illegal business
 - Association
 - Illegal building

Boundaries Problem

The uncoordinated land uses with the industrial nodes may hamper the success of the Township economy looking at the poor partnership between the Private developer, community and City (i.e. City of Johannesburg or other sphere of government).

Regulatory

- Municipal By-laws and Policies
- Provincial and National Legislation

Unregulated:

- Business
- Building construction
 - Electricity
- Land use/settlement
 - Recycling centre
 - Partnership

Thank you